

LPU230 Setting

Program User manual

V1.4.0

Contents

About Setting Program.....3

Organization.....3

Using.....3

Update firmware.....7

About Setting Program

This program is provided for changing LPU230 product configuration.

Organization

lpu230.exe – executable file.

this file is dependent on setupapi.dll, kernel32.dll, user32.dll, gdi32.dll, comdlg32.dll, advapi32.dll, ole32.dll, oleaut32.dll, comctl32.dll, hid.dll, ng_DDL_hid.dll and tg_rom.dll.

Using

Run lpu230.exe.

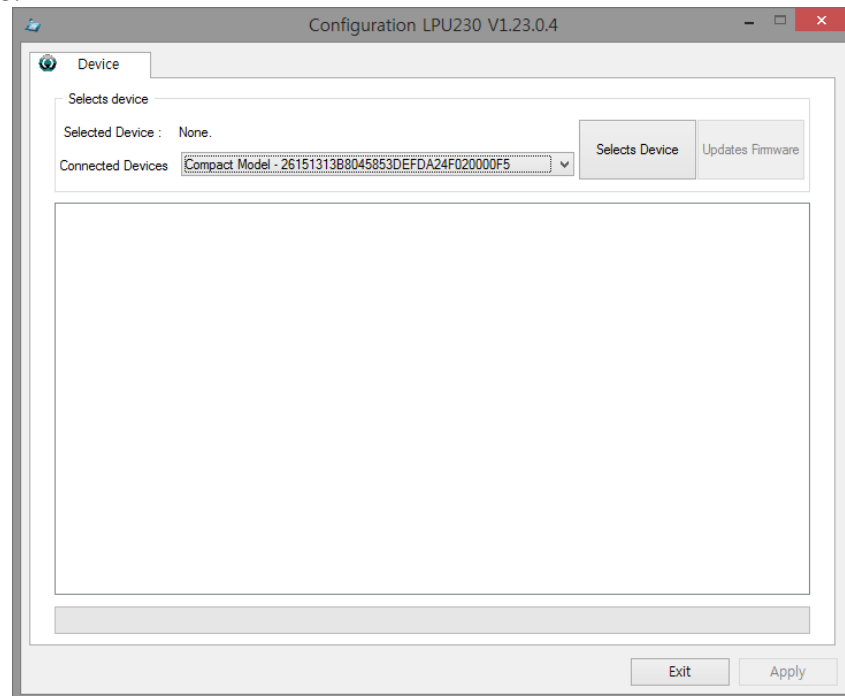


figure 1: before opening device.

Selects a device in "Selects Device" combo list, Press "Selects Device" button.

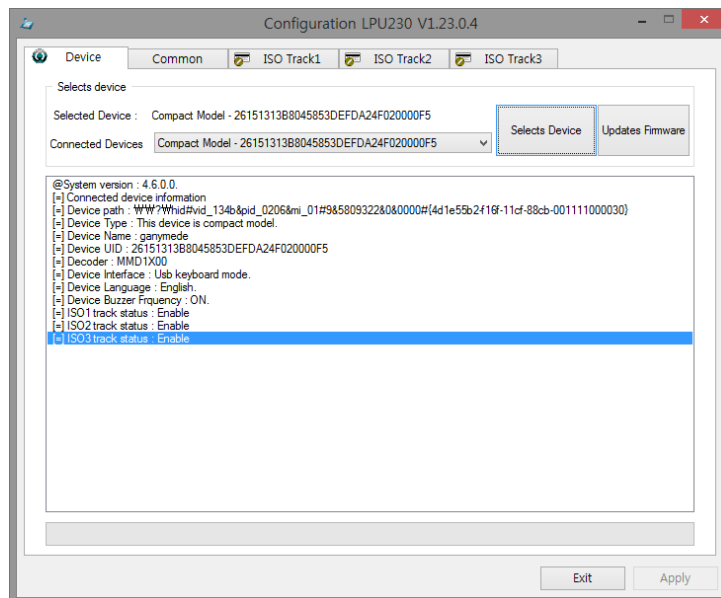


figure 2: after opening device.

To change Enable/Disable buzzer, language, enable/disable each ISO track, Selects "Common" tab. If you use D or E model, you can change a Interface.

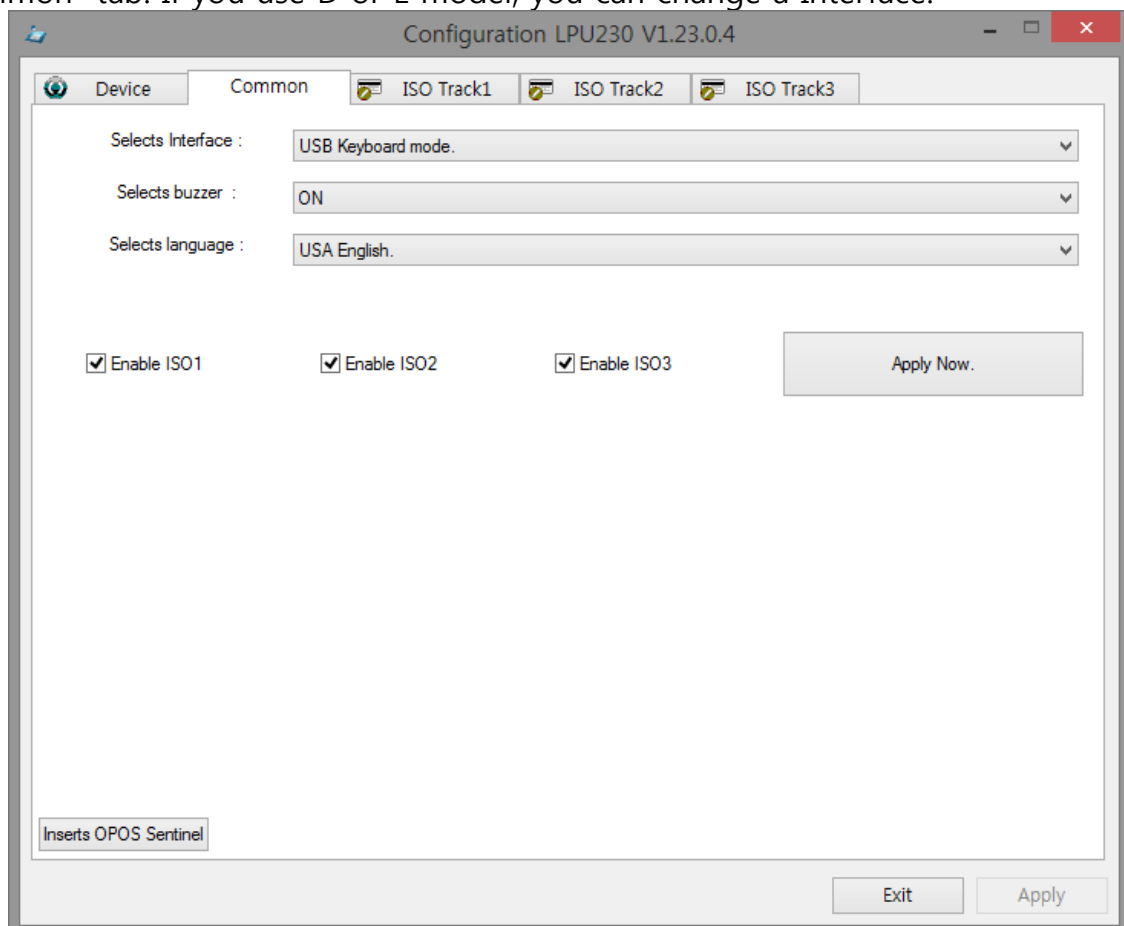


figure 3: Common tab

In above picture, "Select buzzer " combo box determines buzzer's On/off.

"Select Language" combo box dose device's language. If you change language, each track keyboard layout will be changed.

Check boxes "Enable ISO1", "Enable ISO2" and "Enable ISO3", each track will be enable/disable.

"Insert Sentinel" button add Start Sentinel Text(STX) and End Sentinel Text(ETX) on each ISO track by private pre/postfix.

On "Insertion Start & End Sentinel" dialog box, If you select "Yes", STX & ETX are added to the exsiting private pre/postfix. If you select "No", the exsiting private pre/postfix are removed and Only STX & ETX are added to private pre/postfix.

To change each track's Private Prefix or Private Postfix, Selects "Tack1" , "Tack2" or "Tack3" tab.

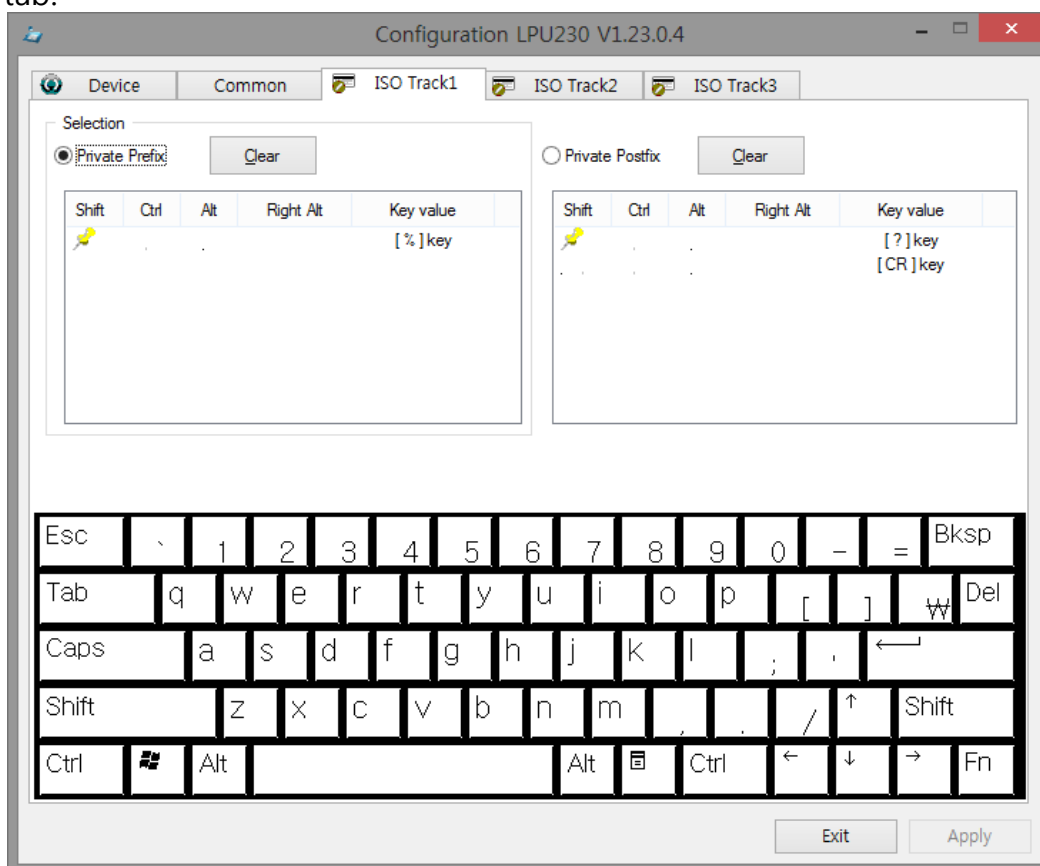


figure 4: track1 pre/postfix setting tab.

In above picture, If you change the Private Prefix , checks "Private Prefix" radio button and input it with virtual keyboard.

If you change the Private Postfix , checks "Private Postfix" radio button and input it with virtual keyboard.

If you input unsupported key, it will be ignored.

"Clear" button will clear all value of " Private Prefix" or " Private Postfix".

After setting device, press "Apply" button for transmitting data to device.

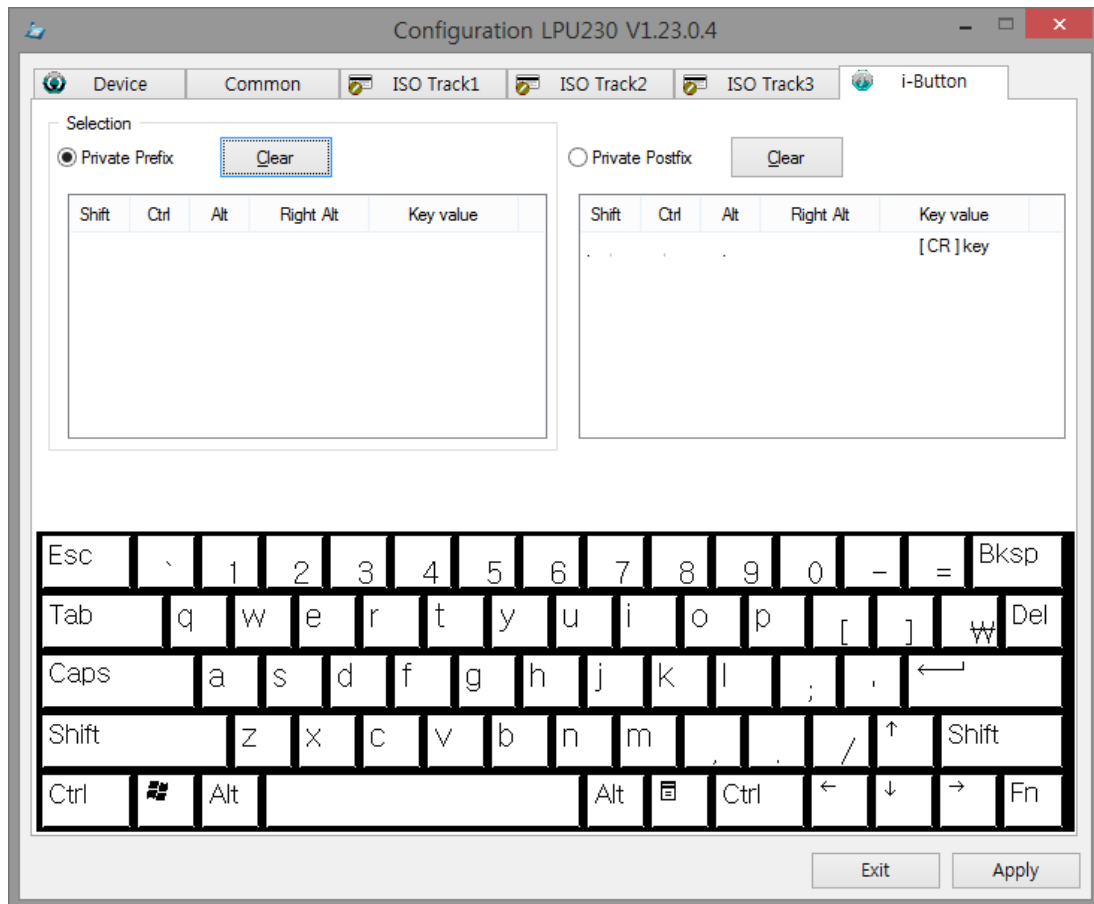


figure 5: i-Button

If your model supports i-Button interface, you can change pre/postfix of i-Button data as figure 5.

<Notice> "Right Alt" Key dosen't work in English key map.(on common tab)

Update firmware

1. Connects device to PC.
2. Runs this program.

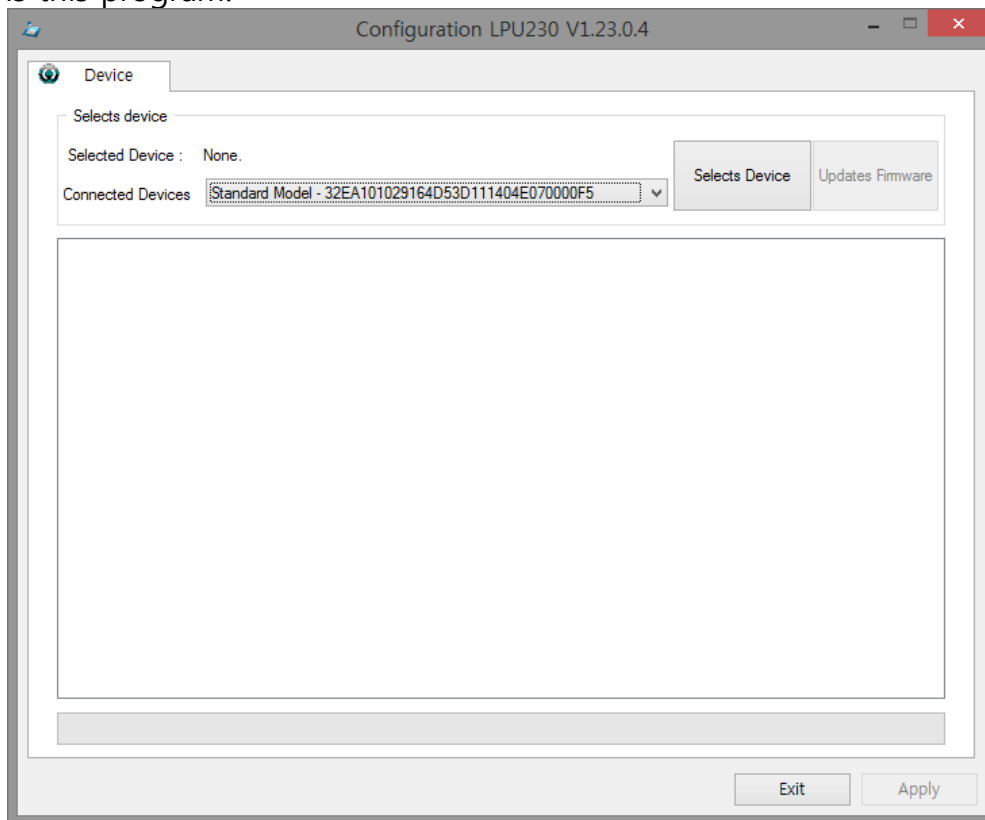


figure 6: before opening device.

3. By "Selects Device" button, Opens device, and press "Updates firmware" button.
4. Press "OK" button in "Do you update a firmware?" dialog.
5. In open dialog, Selects new firmware, press "Open" button, then system-update will be started.

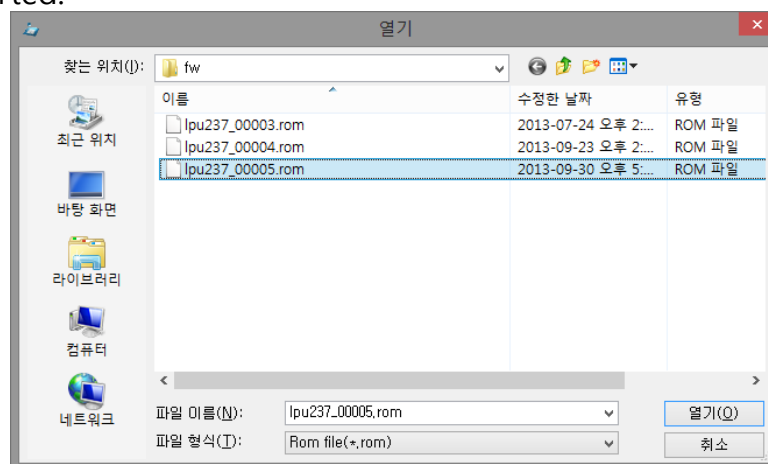


사진 7: Firmware selection dialog

6. Waits for "SUCCESS UPDATING FIRMWARE" Message box.

7. Exits program.

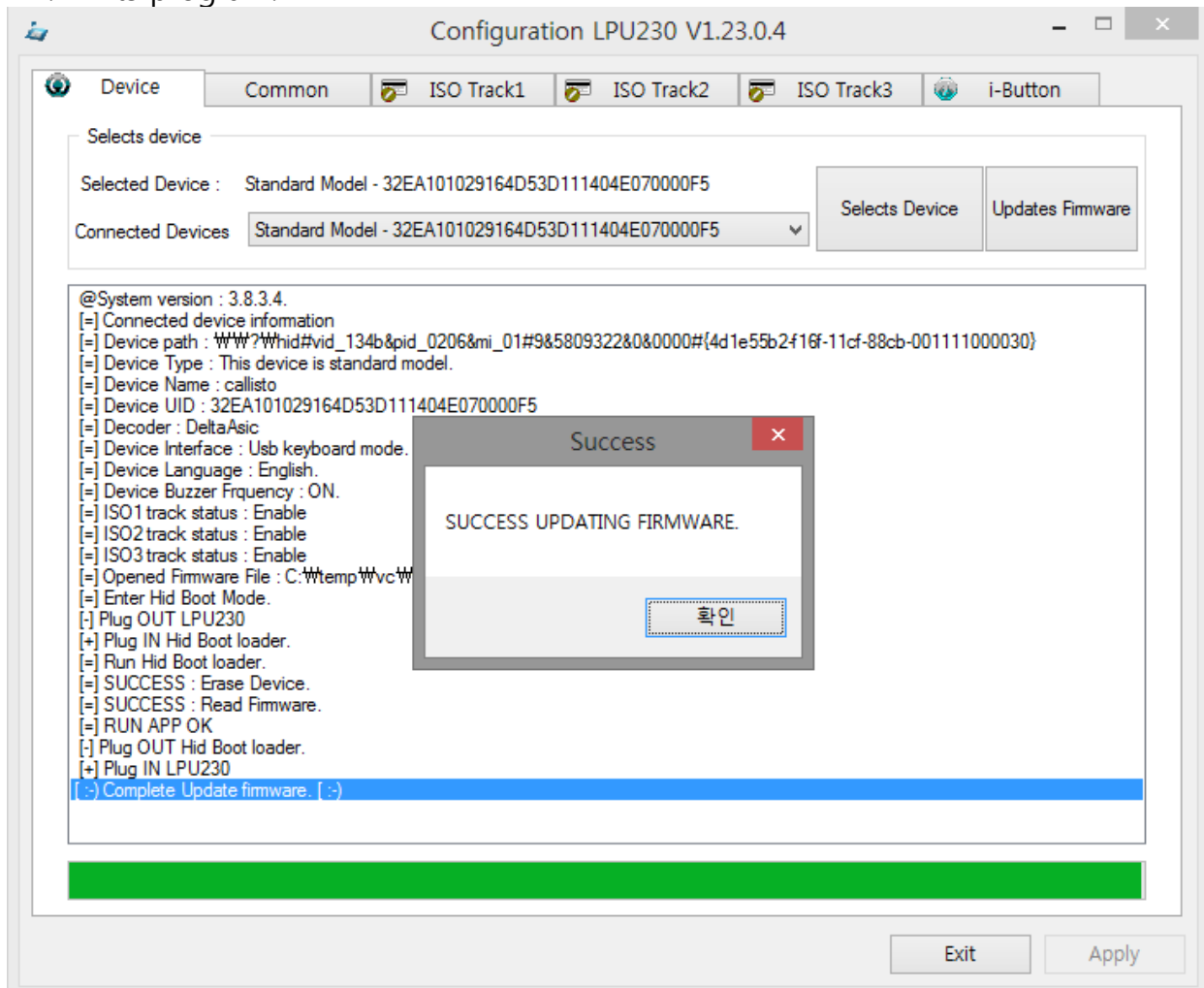


figure 8: complete firmware update.

As your PC, updating time will be over 1 minute. therefore you must wait for completing process.